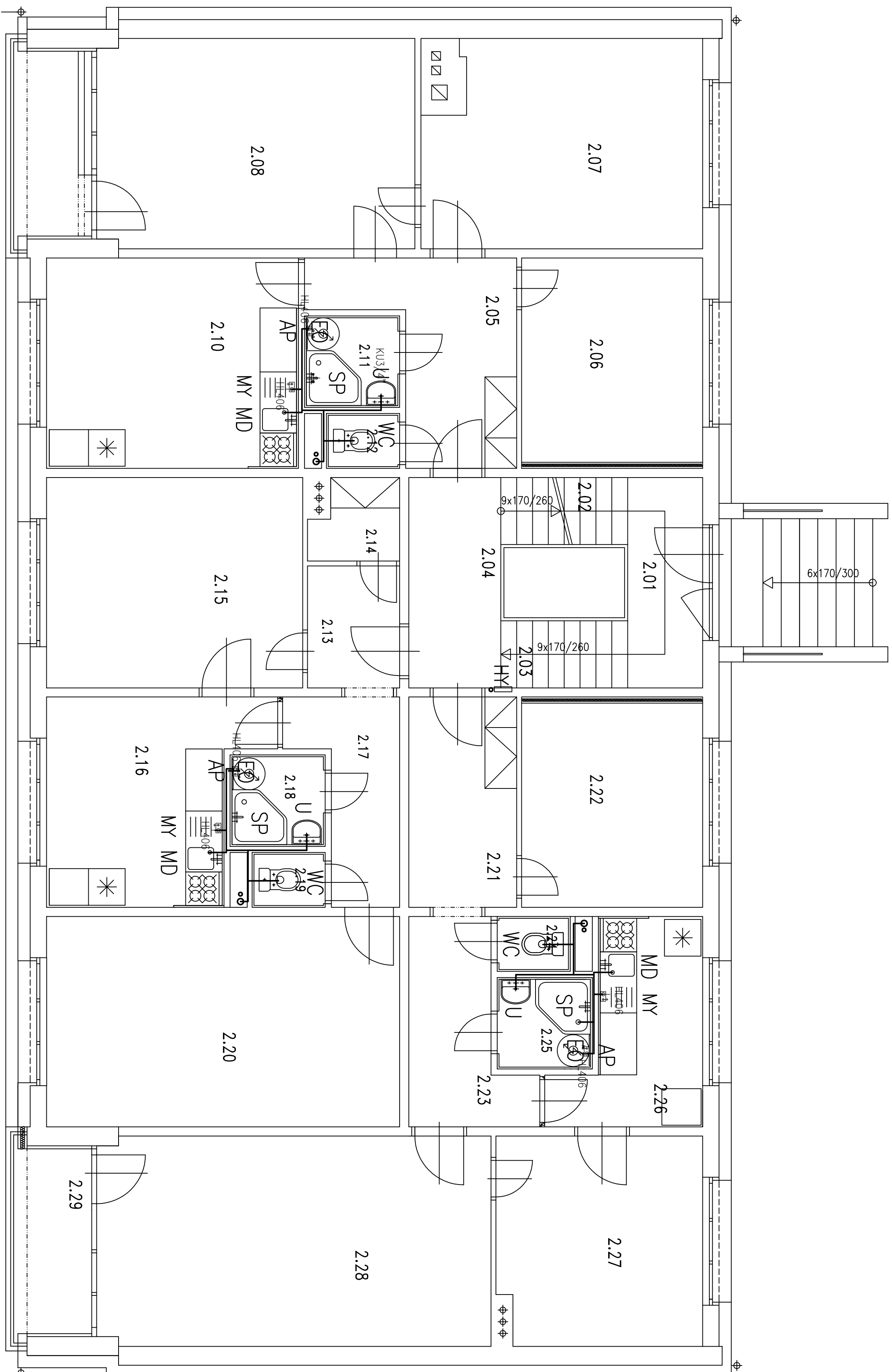


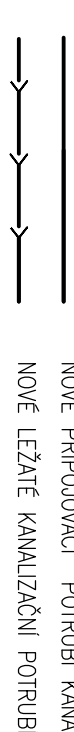
PŮDORYS 2.NP

ROZVODY KANALIZACE



LEGENDA

1) OZNAČENÍ POTRUB



POZNÁMKA

NOVÝ VNITŘNÍ ROZVOD VODY BUDE PROVEDEN NAPŘ. Z POTRUBÍ PP-R Hostalen PN 20C
POTRUBÍ BUDE IZOLOVÁNO IZOLOČÍ MIRALON V TL. MIN. 9 MM

2) ZAŘIZOVACÍ PŘEDMĚTY

WC ZACHODOVÁ MISA KOMBI, NADRŽKA, ŠETŘICI
SPLACHOVÁNÍ, ROHAČEK, PRKÉNKO

UMYVADLO DITUKRITOVÉ BARVA BILÁ, SIFON,
ROHÁČEK, UMYVADLOVÁ STOLANKOVÁ BATERIE,

SP SPRCHOVÁ VANIČKA , ODPAD, ZÁSTĚNA LOMENÁ, SPRCHOVÁ BATERIE (SET), ZAKRYTOVÝ PANEL

MD MYČÍ DŘEZ NEREZOVÝ JEDNODILNÝ S ODKAPÁVACÍ PLOCHOU SÍŤON ROHAČEK DŘEZOVÁ PÁKOVÁ

BATERIE SE SPRŠKOU

MY STAVEBNÍ PŘÍPRAVENOST PRO NÁPOJENÍ MYČKY

AP STAVEBNÍ PŘÍPRAVENOST PRO NAPAJENÍ PRAČKY
HL 406

VO
VČ. POJISTNÉ BEZP. SESTAVY + HL 21

HYDRANTOVÁ SKŘIŇ

[illegible]

01 BYTOVÁ JEDNOTKA 3+

[illegible]

02 BYTOVÁ JEDNOTKA 2+

Case	Study	Study design	Study location	Study period	Study population	Study results
1	1992	Case-control	USA	1988-1990	100 cases of H1N1	100% positive
2	1993	Case-control	USA	1991-1992	100 cases of H1N1	100% positive
3	1994	Case-control	USA	1992-1993	100 cases of H1N1	100% positive
4	1995	Case-control	USA	1993-1994	100 cases of H1N1	100% positive
5	1996	Case-control	USA	1994-1995	100 cases of H1N1	100% positive
6	1997	Case-control	USA	1995-1996	100 cases of H1N1	100% positive
7	1998	Case-control	USA	1996-1997	100 cases of H1N1	100% positive
8	1999	Case-control	USA	1997-1998	100 cases of H1N1	100% positive
9	2000	Case-control	USA	1998-1999	100 cases of H1N1	100% positive
10	2001	Case-control	USA	1999-2000	100 cases of H1N1	100% positive
11	2002	Case-control	USA	2000-2001	100 cases of H1N1	100% positive
12	2003	Case-control	USA	2001-2002	100 cases of H1N1	100% positive
13	2004	Case-control	USA	2002-2003	100 cases of H1N1	100% positive
14	2005	Case-control	USA	2003-2004	100 cases of H1N1	100% positive
15	2006	Case-control	USA	2004-2005	100 cases of H1N1	100% positive
16	2007	Case-control	USA	2005-2006	100 cases of H1N1	100% positive
17	2008	Case-control	USA	2006-2007	100 cases of H1N1	100% positive
18	2009	Case-control	USA	2007-2008	100 cases of H1N1	100% positive
19	2010	Case-control	USA	2008-2009	100 cases of H1N1	100% positive
20	2011	Case-control	USA	2009-2010	100 cases of H1N1	100% positive
21	2012	Case-control	USA	2010-2011	100 cases of H1N1	100% positive
22	2013	Case-control	USA	2011-2012	100 cases of H1N1	100% positive
23	2014	Case-control	USA	2012-2013	100 cases of H1N1	100% positive
24	2015	Case-control	USA	2013-2014	100 cases of H1N1	100% positive
25	2016	Case-control	USA	2014-2015	100 cases of H1N1	100% positive
26	2017	Case-control	USA	2015-2016	100 cases of H1N1	100% positive
27	2018	Case-control	USA	2016-2017	100 cases of H1N1	100% positive
28	2019	Case-control	USA	2017-2018	100 cases of H1N1	100% positive
29	2020	Case-control	USA	2018-2019	100 cases of H1N1	100% positive
30	2021	Case-control	USA	2019-2020	100 cases of H1N1	100% positive
31	2022	Case-control	USA	2020-2021	100 cases of H1N1	100% positive
32	2023	Case-control	USA	2021-2022	100 cases of H1N1	100% positive
33	2024	Case-control	USA	2022-2023	100 cases of H1N1	100% positive
34	2025	Case-control	USA	2023-2024	100 cases of H1N1	100% positive
35	2026	Case-control	USA	2024-2025	100 cases of H1N1	100% positive
36	2027	Case-control	USA	2025-2026	100 cases of H1N1	100% positive
37	2028	Case-control	USA	2026-2027	100 cases of H1N1	100% positive
38	2029	Case-control	USA	2027-2028	100 cases of H1N1	100% positive
39	2030	Case-control	USA	2028-2029	100 cases of H1N1	100% positive
40	2031	Case-control	USA	2029-2030	100 cases of H1N1	100% positive
41	2032	Case-control	USA	2030-2031	100 cases of H1N1	100% positive
42	2033	Case-control	USA	2031-2032	100 cases of H1N1	100% positive
43	2034	Case-control	USA	2032-2033	100 cases of H1N1	100% positive
44	2035	Case-control	USA	2033-2034	100 cases of H1N1	100% positive
45	2036	Case-control	USA	2034-2035	100 cases of H1N1	100% positive
46	2037	Case-control	USA	2035-2036	100 cases of H1N1	100% positive
47	2038	Case-control	USA	2036-2037	100 cases of H1N1	100% positive
48	2039	Case-control	USA	2037-2038	100 cases of H1N1	100% positive
49	2040	Case-control	USA	2038-2039	100 cases of H1N1	100% positive
50	2041	Case-control	USA	2039-2040	100 cases of H1N1	100% positive
51	2042	Case-control	USA	2040-2041	100 cases of H1N1	100% positive
52	2043	Case-control	USA	2041-2042	100 cases of H1N1	100% positive
53	2044	Case-control	USA	2042-2043	100 cases of H1N1	100% positive
54	2045	Case-control	USA	2043-2044	100 cases of H1N1	100% positive
55	2046	Case-control	USA	2044-2045	100 cases of H1N1	100% positive
56	2047	Case-control	USA	2045-2046	100 cases of H1N1	100% positive
57	2048	Case-control	USA	2046-2047	100 cases of H1N1	100% positive
58	2049	Case-control	USA	2047-2048	100 cases of H1N1	100% positive
59	2050	Case-control	USA	2048-2049	100 cases of H1N1	100% positive
60	2051	Case-control	USA	2049-2050	100 cases of H1N1	100% positive
61	2052	Case-control	USA	2050-2051	100 cases of H1N1	100% positive
62	2053	Case-control	USA	2051-2052	100 cases of H1N1	100% positive
63	2054	Case-control	USA	2052-2053	100 cases of H1N1	100% positive
64	2055	Case-control	USA	2053-2054	100 cases of H1N1	100% positive
65	2056	Case-control	USA	2054-2055	100 cases of H1N1	100% positive
66	2057	Case-control	USA	2055-2056	100 cases of H1N1	100% positive
67	2058	Case-control	USA	2056-2057	100 cases of H1N1	100% positive
68	2059	Case-control	USA	2057-2058	100 cases of H1N1	100% positive
69	2060	Case-control	USA	2058-2059	100 cases of H1N1	100% positive
70	2061	Case-control	USA	2059-2060	100 cases of H1N1	100% positive
71	2062	Case-control	USA	2060-2061	100 cases of H1N1	100% positive
72	2063	Case-control	USA	2061-2062	100 cases of H1N1	100% positive
73	2064	Case-control	USA	2062-2063	100 cases of H1N1	100% positive
74	2065	Case-control	USA	2063-2064	100 cases of H1N1	100% positive
75	2066	Case-control	USA	2064-2065	100 cases of H1N1	100% positive
76	2067	Case-control	USA	2065-2066	100 cases of H1N1	100% positive
77	2068	Case-control	USA	2066-2067	100 cases of H1N1	100% positive
78	2069	Case-control	USA	2067-2068	100 cases of H1N1	100% positive
79	2070	Case-control	USA	2068-2069	100 cases of H1N1	100% positive
80	2071	Case-control	USA	2069-2070	100 cases of H1N1	100% positive
81	2072	Case-control	USA	2070-2071	100 cases of H1N1	100% positive
82	2073	Case-control	USA	2071-2072	100 cases of H1N1	100% positive
83	2074	Case-control	USA	2072-2073	100 cases of H1N1	100% positive
84	2075	Case-control	USA	2073-2074	100 cases of H1N1	100% positive
85	2076	Case-control	USA	2074-2075	100 cases of H1N1	100% positive
86	2077	Case-control	USA	2075-2076	100 cases of H1N1	100% positive
87	2078	Case-control	USA	2076-2077	100 cases of H1N1	100% positive
88	2079	Case-control	USA	2077-2078	100 cases of H1N1	100% positive
89	2080	Case-control	USA	2078-2079	100 cases of H1N1	100% positive
90	2081	Case-control	USA	2079-2080	100 cases of H1N1	100% positive
91	2082	Case-control	USA	2080-2081	100 cases of H1N1	100% positive
92	2083	Case-control	USA	2081-2082	100 cases of H1N1	100% positive
93	2084	Case-control	USA	2082-2083	100 cases of H1N1	100% positive
94	2085	Case-control	USA	2083-2084	100 cases of H1N1	100% positive
95	2086	Case-control	USA	2084-2085	100 cases of H1N1	100% positive
96	2087	Case-control	USA	2085-2086	100 cases of H1N1	100% positive
97	2088	Case-control	USA	2086-2087	100 cases of H1N1	100% positive
98	2089	Case-control	USA	2087-2088	100 cases of H1N1	100% positive
99	2090	Case-control	USA	2088-2089	100 cases of H1N1	100% positive
100	2091	Case-control	USA	2089-2090	100 cases of H1N1	100% positive

03 BYTOVÁ JEDNOTKA 3+

SL	NAME	TYPE	STATUS	STATUS	STATUS	STATUS
1	1	1	1	1	1	1
2	2	2	2	2	2	2
3	3	3	3	3	3	3
4	4	4	4	4	4	4
5	5	5	5	5	5	5
6	6	6	6	6	6	6
7	7	7	7	7	7	7
8	8	8	8	8	8	8
9	9	9	9	9	9	9
10	10	10	10	10	10	10
11	11	11	11	11	11	11
12	12	12	12	12	12	12
13	13	13	13	13	13	13
14	14	14	14	14	14	14
15	15	15	15	15	15	15
16	16	16	16	16	16	16
17	17	17	17	17	17	17
18	18	18	18	18	18	18
19	19	19	19	19	19	19
20	20	20	20	20	20	20
21	21	21	21	21	21	21
22	22	22	22	22	22	22
23	23	23	23	23	23	23
24	24	24	24	24	24	24
25	25	25	25	25	25	25
26	26	26	26	26	26	26
27	27	27	27	27	27	27
28	28	28	28	28	28	28
29	29	29	29	29	29	29
30	30	30	30	30	30	30
31	31	31	31	31	31	31
32	32	32	32	32	32	32
33	33	33	33	33	33	33
34	34	34	34	34	34	34
35	35	35	35	35	35	35
36	36	36	36	36	36	36
37	37	37	37	37	37	37
38	38	38	38	38	38	38
39	39	39	39	39	39	39
40	40	40	40	40	40	40
41	41	41	41	41	41	41
42	42	42	42	42	42	42
43	43	43	43	43	43	43
44	44	44	44	44	44	44
45	45	45	45	45	45	45
46	46	46	46	46	46	46
47	47	47	47	47	47	47
48	48	48	48	48	48	48
49	49	49	49	49	49	49
50	50	50	50	50	50	50
51	51	51	51	51	51	51
52	52	52	52	52	52	52
53	53	53	53	53	53	53
54	54	54	54	54	54	54
55	55	55	55	55	55	55
56	56	56	56	56	56	56
57	57	57	57	57	57	57
58	58	58	58	58	58	58
59	59	59	59	59	59	59
60	60	60	60	60	60	60
61	61	61	61	61	61	61
62	62	62	62	62	62	62
63	63	63	63	63	63	63
64	64	64	64	64	64	64
65	65	65	65	65	65	65
66	66	66	66	66	66	66
67	67	67	67	67	67	67
68	68	68	68	68	68	68
69	69	69	69	69	69	69
70	70	70	70	70	70	70
71	71	71	71	71	71	71
72	72	72	72	72	72	72
73	73	73	73	73	73	73
74	74	74	74	74	74	74
75	75	75	75	75	75	75
76	76	76	76	76	76	76
77	77	77	77	77	77	77
78	78	78	78	78	78	78
79	79	79	79	79	79	79
80	80	80	80	80	80	80
81	81	81	81	81	81	81
82	82	82	82	82	82	82
83	83	83	83	83	83	83
84	84	84	84	84	84	84
85	85	85	85	85	85	85
86	86	86	86	86	86	86
87	87	87	87	87	87	87
88	88	88	88	88	88	88
89	89	89	89	89	89	89
90	90	90	90	90	90	90
91	91	91	91	91	91	91
92	92	92	92	92	92	92
93	93	93	93	93	93	93
94	94	94	94	94	94	94
95	95	95	95	95	95	95
96	96	96	96	96	96	96
97	97	97	97	97	97	97
98	98	98	98	98	98	98
99	99	99	99	99	99	99
100	100	100	100	100	100	100



REVITALIZACE BYTOVÉHO DOMU
ZHOŘ U STŘÍBRA Č.P. 58

DOKUMENTACE PRO PROVÁDĚNÍ STAVBY

[illegible]